



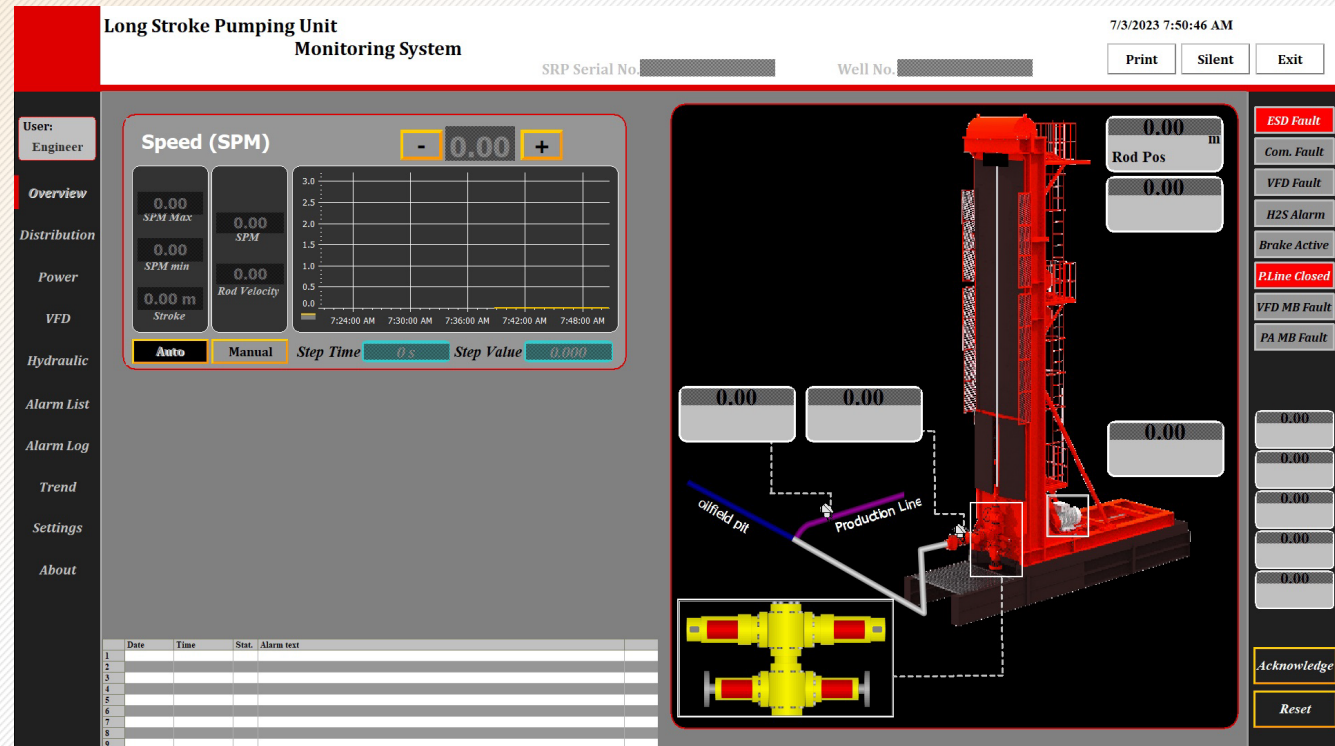
OST

Oilfields Smart
Technologies LLC

Smart Control

Smart Control for Rod Pumps

- Integrated intelligent control
- Total condition monitoring
- All parameters record & control
- Totally remote monitoring/control
- Well/field remote-smart
- Pumping procedure & equipment
- Auto-Safe systems
- Fast response & auto actuate
- Dynamograph (Pump Cards) PLUS More graphs
- Production optimization
- VFD Optimized
- Power sources smart control
- Ex-Proof Instruments & wiring
- Oil/Gas leakage detection systems
- Monitor & control auto-hyd. BOP
- Monitor Manual BOP



Parameters

Title	Parameters	Remark
Pumping Speed	SPM	
Polished Rod	Polished Rod Weight	
	Polished Rod Position	
Pressure	Wellhead Pres.	
	Production (Flow) Line Pres.	
Leakage Detection	Gas leakage	Optional
	H2S leakage	Optional
	Oil leakage	Optional
General	Brake Position	
	Power Transmission Lubricant Level	Optional
	Gearbox Oil Temperature	Optional
Main Motor	Speed / Frequency	
	3-Phase Currents	
	3-Phase Currents Unbalance	
	3-Phase Voltages	
	3-Phase Voltages Unbalance	
	Temperature	Optional
	Bearings Temperature	Optional



Parameters

Title	Parameters	Remark
VFD (Motor Drive)	Input Frequency	
	Input 3-Phase Voltages	
	Input 3-Phase Voltages Unbalance	
	DC Level Voltage	
	Output Frequency	
	Output 3-Phase Currents	
	Output 3-Phase Currents Unbalance	
	Output 3-Phase Voltages	
	Output 3-Phase Voltages Unbalance	
	All VFD internal parameters and safety features	
Power	Power Source (Utility or Generators)	
	Frequency	
	3-Phase Currents	
	3-Phase Currents Unbalance	
	3-Phase Voltages	
	3-Phase Voltages Unbalance	
	Active Power	
	Reactive Power	
Hydraulic System & BOP	Hydraulic Accumulator Pressure	In case using Auto-Hyd. BOP
	Hydraulic Pump	
	Auto. BOP Ram Seals (2 Nos)	
	Manual BOP Ram Seals (2 Nos)	Optional
Generators	Output Frequency	In case using generators Optional
	Output 3-Phase Currents	
	Output 3-Phase Currents Unbalance	
	Output 3-Phase Voltages	
	Output 3-Phase Voltages Unbalance	
	Alternator Temperature	
	Engine coolant temperature	
	Engine coolant level	
	Engine oil pressure	
	Engine speed	
	Engine fuel level	
	Engine battery voltage	
	Engine working hours	



User Friendly & Flexible



ALARM LOG

User: ENGINEER Time: 19:03:55 Date: 04.06.17

Common ESD Common Fault PA Communication Error Alarm VFD Communication Error Alarm H2S Alarm Hand Brake

Date	Time	Message text	UserName	Status
04/06/2017	19:00:20	Inverter Speed Alarm Low	ENGINEER	OK
04/06/2017	19:00:08	Inverter Speed Alarm Low	ENGINEER	OK
04/06/2017	19:00:00	Inverter Speed Alarm Low Low	ENGINEER	OK
04/06/2017	19:00:00	Inverter Speed Alarm Low	ENGINEER	OK
04/06/2017	18:57:01	Rod Load Alarm Low	ENGINEER	OK
04/06/2017	18:56:25	Rod Load Alarm Low	ENGINEER	OK
04/06/2017	18:56:18	Rod Load Alarm Low	ENGINEER	OK
04/06/2017	18:56:18	Rod Load Alarm Low	ENGINEER	OK
04/06/2017	18:56:15	Rod Load Alarm Low	ENGINEER	OK
04/06/2017	18:56:11	Rod Load Alarm Low	ENGINEER	OK
04/06/2017	18:56:08	Inverter Speed Alarm Low Low	ENGINEER	OK
04/06/2017	18:56:07	Inverter Speed Alarm Low	ENGINEER	OK
04/06/2017	18:56:06	Inverter Speed Alarm Low	ENGINEER	OK
04/06/2017	18:55:56	Inverter Speed Alarm Low Low	ENGINEER	OK
04/06/2017	18:55:06	Inverter Speed Alarm Low	ENGINEER	OK
04/06/2017	18:55:06	Inverter Speed Alarm Low Low	ENGINEER	OK
04/06/2017	18:55:06	Rod Load Alarm Low	ENGINEER	OK
04/06/2017	18:55:02	Main Motor Common Shutdown Alarm	ENGINEER	OK
04/06/2017	18:53:50	Main Motor Common Shutdown Alarm	ENGINEER	OK
04/06/2017	18:52:50	Main Motor Common Shutdown Alarm	ENGINEER	OK
04/06/2017	18:52:50	Rod Load Alarm Low	ENGINEER	OK
04/06/2017	18:52:49	Inverter Speed Alarm Low Low	ENGINEER	OK
04/06/2017	18:52:49	Inverter Speed Alarm Low	ENGINEER	OK
04/06/2017	18:52:48	Inverter Speed Alarm Low Low	ENGINEER	OK
04/06/2017	18:52:46	Inverter Speed Alarm Low	ENGINEER	OK
04/06/2017	18:52:14	Main Motor Common Shutdown Alarm	ENGINEER	OK
04/06/2017	18:51:53	Main Motor Common Shutdown Alarm	ENGINEER	OK
04/06/2017	18:48:52	Inverter Speed Alarm Low Low	ENGINEER	OK
04/06/2017	18:48:52	Inverter Speed Alarm Low	ENGINEER	OK
04/06/2017	18:48:52	Main Motor Common Shutdown Alarm	ENGINEER	OK
04/06/2017	18:48:52	Main Motor Common Shutdown Alarm	ENGINEER	OK
04/06/2017	18:43:49	Inverter Speed Alarm Low	ENGINEER	OK
04/06/2017	18:43:48	Inverter Speed Alarm Low Low	ENGINEER	OK
04/06/2017	18:43:46	Inverter Speed Alarm Low	ENGINEER	OK

Long Stroke Pumping Unit Monitoring System

SRP Serial No: _____ Well No: _____

7/3/2023 7:50:46 AM Print Silent Exit

User: Engineer

Speed (SPM)

0.00 SPM Max 0.00 SPM

0.00 SPM min 0.00 Rod Velocity

0.00 m Stroke

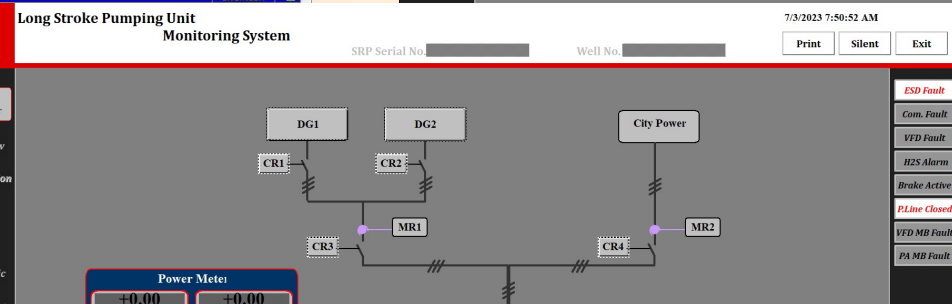
Auto **Manual** Step Time: 0.5 Step Value: 0.000

Overview
Distribution
Power
VFD
Hydraulic

0.00 Rod Pos

0.00

ESD Fault
Com. Fault
VFD Fault
H2S Alarm
Brake Active
PLine Closed
VFD MB Fault
PA MB Fault



Long Stroke Pumping Unit Monitoring System

SRP Serial No: _____ Well No: _____

7/3/2023 7:50:59 AM Print Silent Exit

User: Engineer

VFD Warnings

Over Load	Under Load	INV Over Load	Last Command
Fan Warning	DB Warn %ED	Fire Mode	Pipe Broken
Last KeyPad	Level Detect	CAP. Warning	Fan Exchange
Load Tune	Low Battery	Spare	Spare

Speed (SPM)

0.00 SPM Max 0.00 SPM

0.00 SPM min 0.00 Rod Velocity

0.00 m Stroke

Auto **Manual** Step Time: 0.5 Step Value: 0.000

ESD Fault to Changeover
Com. Fault Changeover Disable
VFD Fault
H2S Alarm
Brake Active
PLine Closed
VFD MB Fault Disable
PA MB Fault ACO Reset
Details

Acknowledge
Reset

Long Stroke Pumping Unit Monitoring System

SRP Serial No: _____ Well No: _____

7/3/2023 7:51:09 AM Print Silent Exit

User: Engineer

Date	Time	Msg. Alarm text	User	Status
04/06/2017	18:50:36	Main Motor Common Shutdown Alarm	ENGINEER	OK
04/06/2017	18:49:13	Main Motor Common Shutdown Alarm	ENGINEER	OK
04/06/2017	18:48:52	Inverter Speed Alarm Low Low	ENGINEER	OK
04/06/2017	18:48:52	Inverter Speed Alarm Low	ENGINEER	OK
04/06/2017	18:48:52	Main Motor Common Shutdown Alarm	ENGINEER	OK
04/06/2017	18:48:52	Main Motor Common Shutdown Alarm	ENGINEER	OK
04/06/2017	18:43:49	Inverter Speed Alarm Low	ENGINEER	OK
04/06/2017	18:43:48	Inverter Speed Alarm Low Low	ENGINEER	OK
04/06/2017	18:43:46	Inverter Speed Alarm Low	ENGINEER	OK

SRP Analysis
DynaGraph
Main Motor
Pressure
24h Analysis Rpt
Rod Pos & Load
Power Analyzer
Gas Detector

Acknowledge
Reset

Long Stroke Pumping Unit Monitoring System

SRP Serial No: _____ Well No: _____

7/3/2023 7:50:55 AM Print Silent Exit

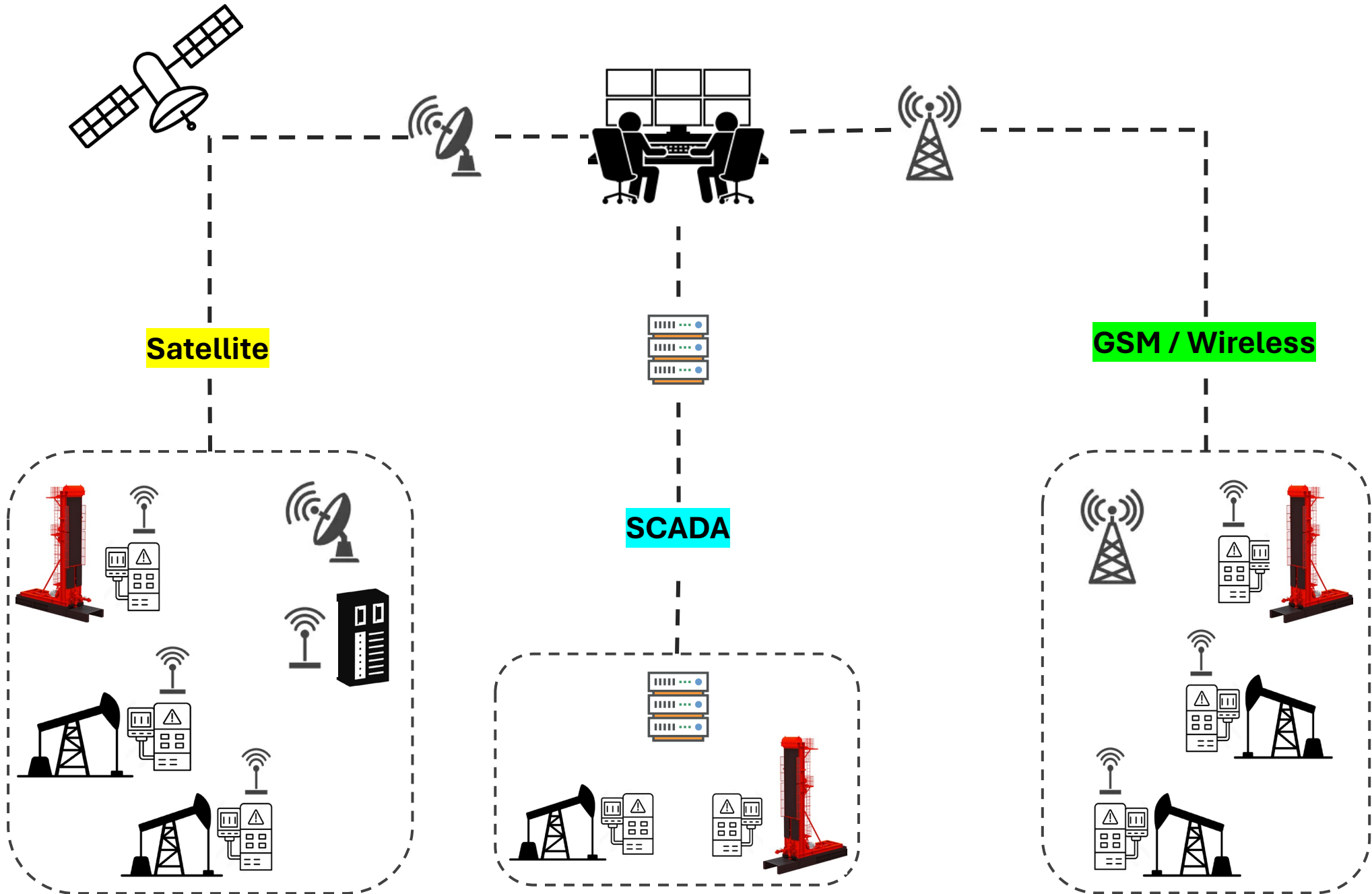
User: Engineer

+0.00	+0.00	+0.00	+0.00	Line Voltage
+0.00	+0.00	+0.00	+0.00	Phase Voltage
+0.00	+0.00	+0.00	+0.00	Current
+0.00	+0.00	+0.00	+0.00	Power
+0.00	+0.00	+0.00	+0.00	Active Power
+0.00	+0.00	+0.00	+0.00	Reactive Power
+0.00	+0.00	+0.00	+0.00	Power Factor

ESD Fault
Com. Fault
VFD Fault
H2S Alarm
Brake Active
PLine Closed
VFD MB Fault
PA MB Fault

Acknowledge
Reset

Remote / Smart Field



Contact



OST

Oilfields Smart
Technologies LLC

<https://www.omanost.com>

Info@omanost.com

***Make it Smart
Save Time & Cost***

